

DIVISION OF PUBLIC HEALTH SERVICES

# CLIENT PROGRAMS & SERVICES

1ST EDITION (2026)



# TABLE OF CONTENTS

Mission & Vision	1
Reproductive Health Services (Family Planning) Women, Infants, and Children Nutrition Program (WIC)	2
Early Hearing Detection & Prevention (EHDI) Early Intervention Service Coordination	3
Children with Special Healthcare Needs (CSHCN) Family Support and Advocacy (F2F HIC)	4
Education and Support For Mommy and Baby (H.O.M.E.) Transportation Vouchers (F2F HIC, CHW Program)	5
Vaccines and Immunization	6
Sexual Health (HIV/STI/VH) TB/Hansens Disease Management	7
Kidney Health Classes Nicotine Cessation Classes	8
Diabetes Self Management	9
Mammogram and Pap Test Vouchers Heart Disease Screening and Management (WISEWOMAN)	10
Food Safety Training and Certification	11

## 2026 Edition

Published by the CHCC Division of Public Health Services. Information included in this directory was accurate at the time of publication; however, services, eligibility requirements, and contact information may change due to funding updates, program modifications, or revised agency guidelines.

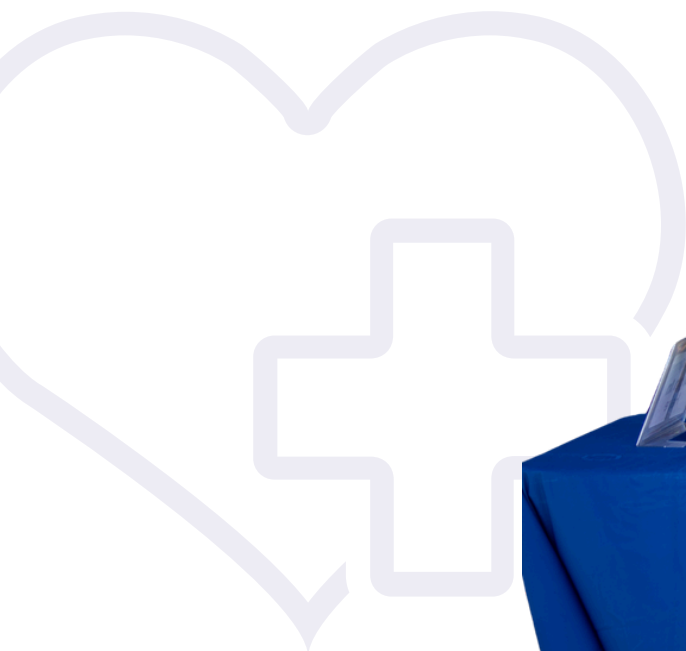


# MISSION

To improve quality of life, health and wellbeing of CNMI residents by providing services that meet and support community needs and values

# VISION

Thriving Families, Healthy Communities, across generations in the CNMI



# REPRODUCTIVE HEALTH

## SERVICES

- Contraception (birth control methods)
- STD/HIV testing, treatment and counseling
- Pregnancy testing and counseling
- Basic infertility counseling
- Cervical cancer screening (pap test)
- Breast exam/mammogram referrals
- Confidential adolescent health services

## WHO DO I CONTACT?

Family Planning Program

☎ 670-2348950 Ext 3352

## WHO IS ELIGIBLE?

All males and females (through age 51) of reproductive age

## WHAT IS THE COST?

Medicaid and private insurance accepted. Assistance with payment options. No individual is turned away regardless of ability to pay for services

# WOMEN, INFANTS AND CHILDREN (WIC) NUTRITION PROGRAM

## SERVICES

- Nutrition education
- Breastfeeding support and education
- Supplemental foods
- Referrals to social and health services

## WHO IS ELIGIBLE?

Pregnant women, 0-5 years old, postpartum women up to 6 months

## WHAT IS THE COST?

Free; must meet income guidelines. NAP or Medicaid participants automatically qualify

## WHO DO I CONTACT?

WIC Program

☎ 670-664-4084



# EARLY HEARING DETECTION AND INTERVENTION

## SERVICES

- **Screening:** For hearing loss ideally occurs before 1 month of age.
- **Diagnostic Evaluation:** If a baby doesn't pass the initial screening, they receive a comprehensive audiological evaluation no later than 3 months of age.
- **Early Intervention:** Babies identified with a permanent hearing loss are referred for enrollment in appropriate early intervention programs by 6 months of age.
- **Follow-up:** Continuous hearing screening for late onset hearing loss until 3 years of age.
- **Family Engagement:** Peer support for parents through a family support program.

## WHO IS ELIGIBLE?

Infants and children from ages birth to 5 years old

## WHAT IS THE COST?

Fees are waived

## WHO DO I CONTACT?

EHDI Program

☎ 670-664-8700



# EARLY INTERVENTION SERVICE COORDINATION

## SERVICES

- Case management
- Patient navigation services

## WHO DO I CONTACT?

Early Intervention Program

☎ 670-664-8700

## WHO IS ELIGIBLE?

Infants and toddlers ages 0-3 years old with a confirmed diagnosis/established condition or developmental delay; enrolled in Early Intervention Services

## WHAT IS THE COST?

Free

# CHILDREN WITH SPECIAL HEALTHCARE NEEDS

## SERVICES

- Orthotics services
- Surgeries which include spinal fusion, knee surgery, fractures and procedure related to musculoskeletal care

## WHAT IS THE COST?

Insurance and Medicaid accepted. Assistance available for those who are uninsured.

## WHO IS ELIGIBLE?

Children and adolescents age 0-17 years old with orthopedic conditions

## WHO DO I CONTACT?

CSHCN Program

☎ 670-234-8951 Ext 2025

# FAMILY SUPPORT AND ADVOCACY

## SERVICES

- Peer to peer support for parents of children with special healthcare needs
- Referral and connection to families and other community-based programs and organizations
- Information and assistance for accessing available community programs
- Advocacy training for parents
- COTA vouchers to support accessing medical care and related services
- Assistance with SSI application
- Resource Center

## WHO IS ELIGIBLE?

Parents and caregivers of children and youth with special health care needs ages 0-21 yrs. old

## WHO DO I CONTACT?

F2F HIC Program

☎ 670-664-8700

## WHAT IS THE COST?

Free



# EDUCATION & SUPPORT FOR MOMMY AND BABY

## SERVICES

- Support in the comfort of your home
- Weekly to quarterly home visits
- Infant and early childhood development curriculum
- Support and referrals for accessing resources in the community
- Screenings for early childhood development
- Support in accessing preventive check-ups (i.e. transportation vouchers, assistance with setting appointments, etc.)

## WHO IS ELIGIBLE?

Pregnant women, parents or primary caregivers with a child under the age of three months old.

A screening/eligibility assessment is conducted to determine program eligibility.

## WHAT IS THE COST?

Free

## WHO DO I CONTACT?

H.O.M.E. Visiting Program

☎ 670-664-8701/2



# TRANSPORTATION VOUCHERS

## SERVICES

- Free and reliable transportation assistance to medical and health-related services

## WHO DO I CONTACT?

Family to Family Health Information Center

☎ 670-664-8700

## WHO IS ELIGIBLE?

Commonwealth Transport Authority (COTA)

Vouchers available for participants of Family 2 Family Health Information Center and NCD Health Management Services

# VACCINES AND IMMUNIZATION

## SERVICES

- Vaccinations approved by Advisory Committee on Immunization Practices (ACIP) and adopted by the CDC
- School Health Certificate issuance
- Vaccine Management
- Maintain Immunization Registry (CNMI WebIz)

## WHO DO I CONTACT?

Immunization Clinic

☎ 670-236-8745



## WHO IS ELIGIBLE?

Children 0-18 years  
Adults 19 years and older

## WHAT IS THE COST?

- No cost to uninsured or under insured patients.
- For children 0-18 years, who are Medicaid insured, Medicaid is billed for the cost of the vaccine administration. The program covers the cost of the vaccine pharmaceutical product
- For children 0-18 years who are Private insured the Immunization Clinic bills the private insurance for the cost of the vaccine product and the cost to administer the vaccine
- For adults 19 years who have Medicaid or private insurance, the Immunization Clinic bills their respective insurance provider

# SEXUAL HEALTH

## SERVICES

- HIV/STI/VH testing and treatment
- HIV/STI/VH case management and contact tracing
- Outreach and community education
- Condom availability
- Other referral services

## WHO DO I CONTACT?

HIV/STI Program ☎ 670-664-4050

## WHO IS ELIGIBLE?

- NO residency is required
- NO individual is turned away regardless of ability to pay

## WHAT IS THE COST?

- Medicaid and private insurance accepted
- Assistance with payment options is available

# TB/HANSENS DISEASE MANAGEMENT

## SERVICES

- Tuberculosis (TB)/ Hansen's Disease (HD) testing and case management
- Directly observed therapy (DOT)
- Contact investigation (includes testing)

## WHO DO I CONTACT?

TB/HD Program  
☎ 670-664-4050

## WHO IS ELIGIBLE?

- NO residency is required
- NO individual is turned away regardless of ability to pay

## WHAT IS THE COST?

- Medicaid and private insurance accepted
- Assistance with payment options is available



# KIDNEY HEALTH CLASSES

## SERVICES

- Classes offered once a month
- Education on preventing and managing chronic kidney disease (CKD)

## WHAT IS THE COST?

Free


## WHO IS ELIGIBLE?

**Class I** - Open to the public

**Class II** - For patients with an EGFR of 25-45 (Provider referral)

**Class III** - For patients with an EGFR 24 and below (Provider referral)

## WHO DO I CONTACT?

 670-234-8951 EXT 2030  
NCD Program

# NICOTINE CESSATION CLASSES

## SERVICES

- Weekly sessions (4 sessions total)
- Education and support for quitting smoking, chewing betel nut, and vaping
- Nicotine replacement therapies (NRTs) are provided for active participants;
  - Nicotine patch or gum



## WHO IS ELIGIBLE?


Adults ready to quit nicotine products

## WHAT IS THE COST?

Free

## WHO DO I CONTACT?

CNMI Tobacco Quitline

 670-2323-QUIT (7848)

# DIABETES SELF MANAGEMENT

## SERVICES

- Diabetes self management education and support (DSMES) on preventing and managing hypertension, diabetes, and heart disease
- Support and referrals for accessing resources in the community
- DSMES Group Sessions
  - Weekly sessions (5 sessions total)
- DSMES Community Health Worker (CHW) Program
  - Weekly one-on-one sessions (4 sessions total) at your home, online or at our offices

## WHO IS ELIGIBLE?

- DSMES Group:
  - Adult men with an A1c of 5.7% and above
  - Adult women with an A1C of 9% and below
- DSMES CHW:
  - Pregnant women diabetes
  - Youth ages 6-14 years with diabetes
  - Adult women with an A1C of 9% and above

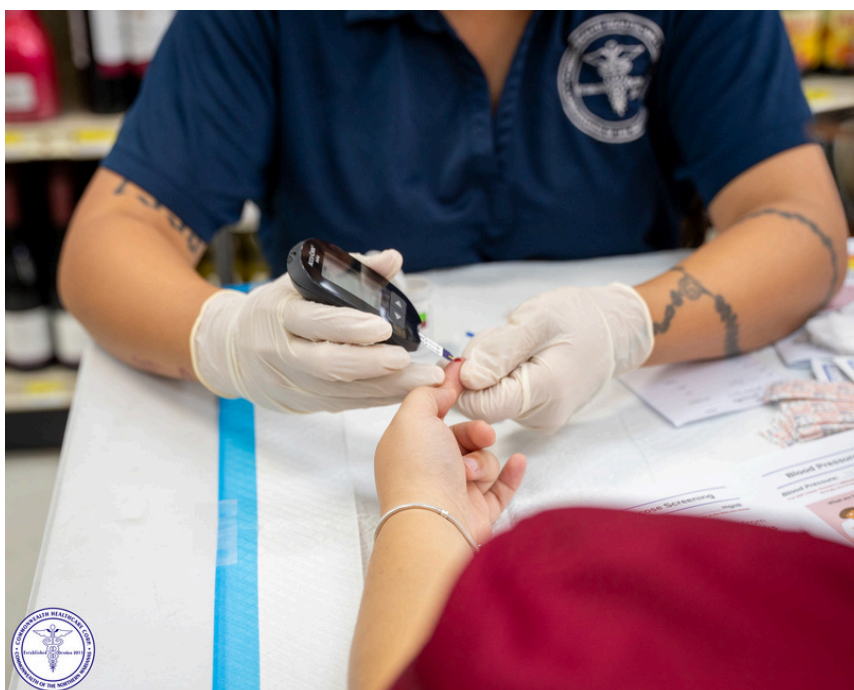
## WHO DO I CONTACT?

NCD Program

☎ 670-234-8951 Ext 2030

## WHAT IS THE COST?

Free



# MAMMOGRAMS AND PAP TEST VOUCHERS

## SERVICES

Vouchers for breast and cervical screenings, such as;

- Mammogram
- Pap test (smear)
- Biopsy
- Ultrasound
- Airfare expenses are covered from Tinian and Rota to Saipan

## WHO DO I CONTACT?

Breast and Cervical Screening Vouchers

☎ 670-234-8951 EXT 2030

## WHO IS ELIGIBLE?

- Women 21 years or older
- Resident of the CNMI for at least 6 months
- Meets Household Income Guidelines of the Breast and Cervical Screening Vouchers (BCSV)

## WHAT IS THE COST?

Free

# HEART DISEASE SCREENING AND MANAGEMENT

## SERVICES

- Heart disease and stroke risk factor screenings
- Health coaching for managing hypertension with weekly progress check-ins
- Support and referrals for accessing resources in the community



## WHO IS ELIGIBLE?

Women ages 35-64 years old who meet the eligibility guidelines of the Breast and Cervical Screening Vouchers

## WHAT IS THE COST?

- Lab fees are covered by Medicaid. If uninsured, program will cover fees
- All other services covered by program

## WHO DO I CONTACT?

Wise Women Program

☎ 670-234-8951 EXT 2030

# FOOD SAFETY TRAINING AND CERTIFICATION

## SERVICES


- Certification for food handlers. Food safety workshop available at the Environmental Health and Disease Prevention (EHDP) Office

## WHO IS ELIGIBLE?

CNMI Food Handlers who complete the food safety workshop and food handler's physical examination

## WHO DO I CONTACT?

Environmental Health & Disease Prevention Program

 670-236-2022

## WHAT IS THE COST?

\$35.00 for certificate



**CLEAN.**



**SEPARATE.**



**COOK.**



**CHILL.**

**EVERY STEP MATTERS  
PRACTICE SAFE FOOD HANDLING EVERY DAY!**

**COMMONWEALTH HEALTHCARE  
CORPORATION (CHCC)  
DIVISION OF PUBLIC HEALTH SERVICES**

**CONTACT**

Public Health Services Main Office

☎ 670-234-8951 ext. 2002



This project was supported by Grant No. 1 NU58DP007792-01-00 from the U.S Department of Health and Human Services (DHH), Center for Disease Control and Prevention (CDC) and the Commonwealth Healthcare Corporation (CHCC). The contents above are solely the responsibility of CHCC and do not necessarily represent the official views of the DHH CDC