

# 3 STEPS TO RECEIVING BCS VOUCHERS

## STEP 1:

If you meet the four (4) BCSV eligibility criteria, you must fill out an application/enrollment form. This can be done by calling the NCDP Programs where staff can enroll you over the phone.

## STEP 2:

NCDP staff will schedule an appointment for you (if you do not already have one).

## STEP 3:

In order for services to be paid for by the NCDP Breast and Cervical Screening Vouchers, you must be seen by a designated healthcare provider. Designated healthcare providers are:

- Commonwealth Healthcare Corporation (CHCC)\*
- Tinian Health Center (THC)\*\*
- Rota Health Center (RHC)\*\*

**\*You can apply for BCS vouchers at the time of your pap test or mammogram appointment (whichever comes first).**

**\*\*Patients who are enrolled at THC and RHC**

Your documents will be forwarded to NCDP BCSV after you have completed your appointment.

### Contact Us

SAIPAN 670-234-8951 Ext 2030  
TINIAN 670-433-9233  
ROTA 670-532-9461

### Office Hours

MONDAY - FRIDAY  
7:30 AM - 4:30 PM  
CLOSED ON HOLIDAYS

### Office Location

ACROSS CHCC GIFT SHOP  
DOOR NO. 4  
(FOLLOW SIGNS FOR BCSV)

### Follow Us Online

 [WWW.CHCC.HEALTH](http://WWW.CHCC.HEALTH)  
 [/CNMIPUBLICHEALTH](https://www.facebook.com/CNMIPUBLICHEALTH)  
 [@CNMICHCC](https://www.instagram.com/CNMICHCC)

"This project was supported by a grant from the Centers for Disease Control and Prevention (CDC). The contents are solely the responsibility of the Commonwealth Healthcare Corporation (CHCC) and do not necessarily represent the official views of CDC."

# Breast & Cervical Screening Vouchers



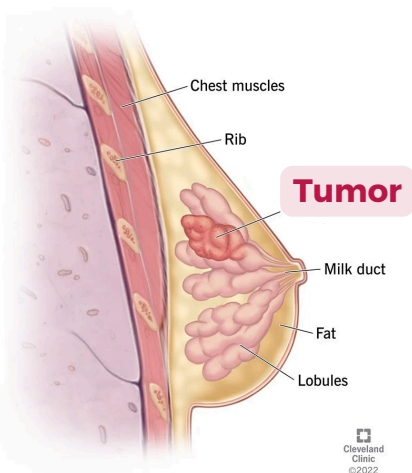
## Non-Communicable Disease Programs (NCDP)

CHCC Public Health Services



# What is Breast **CANCER?**

When cells in your breast grow and divide more than they should or do not die when they should, creating a **tumor**.



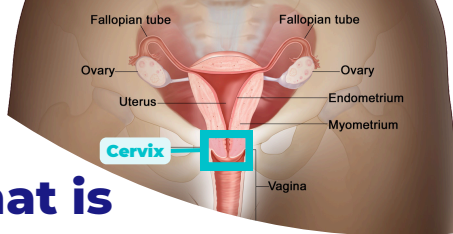
Although breast cancer screenings cannot prevent breast cancer, they can help find breast cancer early, when it is easier to treat.

A **mammogram** is the best way to find breast cancer for most women of screening age.

- Women 40 years of age or older who are at average risk for breast cancer should **get a mammogram every one to two years.**

Other ways of screening for breast cancer:

- magnetic resonance imaging (MRI)
- clinical breast exams.



# What is Cervical **CANCER?**

Cervical cancer is when the cells in your cervix grow out of control. The **cervix** is a passage between the womb and the vagina.

More than 95% of cervical cancer is caused by **human papillomavirus (HPV)**.

**Pap test or pap smear** collects cervical cells to check for changes caused by HPV



**HPV test** checks cells for infection with high-risk HPV types that can cause cervical cancer

If you are 21 to 29	<ul style="list-style-type: none"> <li>• Have a pap test alone every 3 years.</li> </ul>
If you are 30 to 65 Screening Options:	<ul style="list-style-type: none"> <li>• Pap test and HPV test (co-test) every 5 years</li> <li>• Pap test alone every 3 years</li> <li>• HPV test alone every 5 years</li> </ul>
If you are 65 years or older You don't need to be screened if:	<ul style="list-style-type: none"> <li>• There is no history of cervical changes</li> <li>• There are either 3 negative paps in a row, 2 negative HPV tests in a row, or 2 negative co-tests in a row</li> </ul>

# Voucher Guidelines

Eligible women can get a voucher for free breast cancer and cervical cancer exams:

- Pap test
- HPV test
- Clinical breast exam
- Mammogram (for women 40 years of age or older) at no cost.

Airfare from Tinian and Rota to CHCC is also covered. See below for requirements:

- ✓ 21 years of age and older
- ✓ Resident of the CNMI for at least 6 months
- ✓ Household income is less than the maximum income for your family size
- ✓ No health insurance or is underinsured

HOUSEHOLD INCOME GUIDELINES		
Household/ Family Size	Maximum Income	
	Per Month	Per Year
1	\$2,161	\$25,935
2	\$2,923	\$35,070
3	\$3,684	\$44,205
4	\$4,445	\$53,340
5	\$5,206	\$62,475

For a household/family size of more than 5, add \$761 (per month) or \$9,135 (per year) for each additional family member.

Please provide a copy of your last two (2) pay stubs, or last year's W-2 form as income verification.